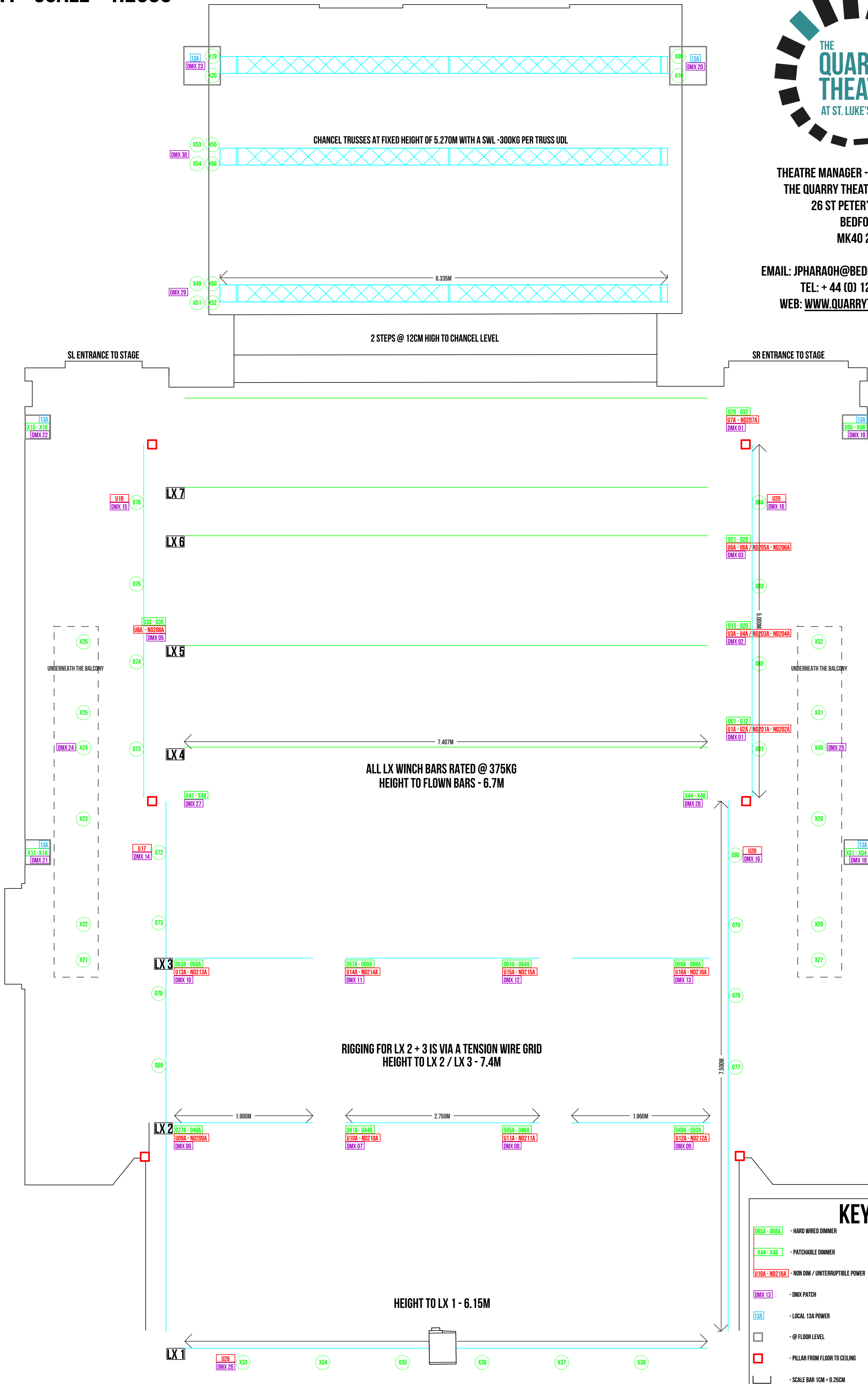




THEATRE MANAGER - JAMES PHARAOH
 THE QUARRY THEATRE AT ST LUKE'S
 26 ST PETER'S STREET
 BEDFORD
 MK40 2NN

EMAIL: JPHARAOH@BEDFORDSCHOOL.ORG.UK
 TEL: + 44 (0) 1234 362269
 WEB: WWW.QUARRYTHEATRE.ORG.UK



KEY

065A - 068A	- HARD WIRED DIMMER	X05 - X08	- WINCHABLE LIGHTING BARS
X44 - X48	- PATCHABLE DIMMER	U18	- HEMP LINES
U16A - ND216A	- NON DIM / UNINTERRUPTIBLE POWER	DMX 01	- FIXED POSITION LIGHTING BARS
DMX 13	- DMX PATCH	DMX 02	- TAB TRACKS
I3A	- LOCAL 13A POWER	DMX 03	- PERFORMANCE AREA
□	- @ FLOOR LEVEL	DMX 04	- SEATING BLOCKS
□	- PILLAR FROM FLOOR TO CEILING	DMX 05	- SETTING LINE
—	- SCALE BAR 1CM = 0.25CM	DMX 06	